

146-155 QUANTUM® 1.28

MANSFIELD®

Round Front, Vitreous China, Two-Piece Toilet

FEATURES

- High performance pressure-assist, high efficiency toilet (HET)
- 1.28 gpf / 4.8 lpf high efficiency water consumption
- Uses 20% less water than conventional toilets
- Round front bowl
- 12" rough-in
- Model 45 chrome-plated, metal trip lever
- 2-1/8" glazed trapway
- The Mansfield® limited lifetime warranty on china, Flushmate ten-year limited warranty on vessel
- Available in White, Biscuit and Bone






MODEL 146-155

Toilet seat not included



ROUND

COMPONENTS

| MODEL # | DESCRIPTION | CODES/STANDARDS |
|--|--|---|
| 146-155 | Round front, pressure-assist, two-piece toilet. Less toilet seat and supply. Specify color. |    |
| 146 | Round front toilet bowl only. Less toilet seat. Specify color. | |
| 155 | Pressure-assist tank and cover only with left hand chrome-plated, metal trip lever. Less supply. Specify color. | |
| TANK OPTIONS | | |
| 155RH | Pressure-assist tank and cover only with right hand chrome-plated, metal trip lever. Less supply. Specify color. | |
| TANK TRIM & REPLACEMENT PARTS | | |
| 45 | Trip lever - chrome-plated, metal trip lever, left hand | |
| 125-LID | Tank lid | |
| FLUSHMATE® 503 | Pressure-assist flushing system. Separate warranty applies. Contact FLUSHMATE® at 1-800-533-3460. | |






146-155 QUANTUM® 1.28

MANSFIELD®

Round Front, Vitreous China, Two-Piece Toilet

SPECIFICATIONS

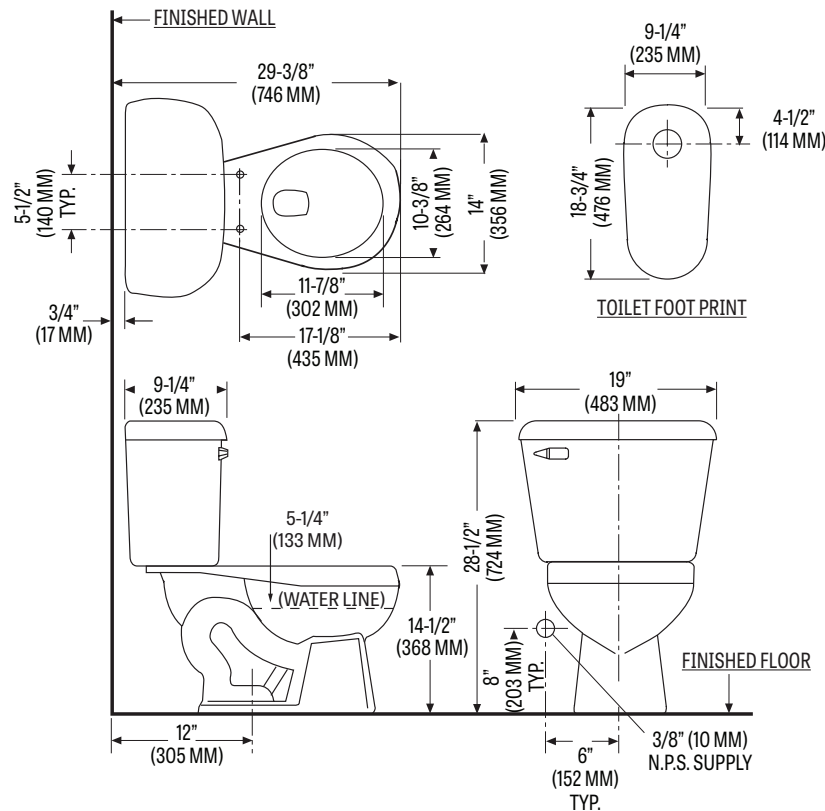
| MODEL # | DESCRIPTION | CODES/STANDARDS |
|---------|---|---|
| 146-155 | Round front (1.28 gpf / 4.8 lpf) two-piece toilet |    |

| | |
|----------------------|--------------------------------|
| MATERIAL | Vitreous China |
| WATER PRESSURE RANGE | 35 to 80 PSI |
| FLUSH SYSTEM | Flushmate™ flushing technology |
| WATER USAGE | 1.28 gpf / 4.8 lpf |
| WATER SURFACE AREA | 9-3/4" X 11-1/2" |
| ROUGH-IN | 12" |
| MAP RATING | Pending |

| | |
|-----------------|--|
| TRAP DIAMETER | 2-1/8" |
| TRAP SEAL | 2-3/4" |
| SHIPPING WEIGHT | Model 146 - 51 lbs. (23.1 kg) Model 155 - 41 lbs. (18.6 kg) |
| WARRANTY | Vitreous China - Limited Lifetime Vessel - Limited Ten Year (Flushmate) |

TECHNICAL INFORMATION

Note: these dimensions are nominal and subject to change without notice.



Fixture performance and specifications meet or exceed ASME A112.19.2-2013/CSA B45.1-13 standards, and other state and local codes.

